

PHOENIX CONTACT CHARX – E-Mobility products

Item type codes

PHOENIX CONTACT CHARX – connect

charging cables

infrastructure charging sockets

vehicle charging inlets



Item type code – PHOENIX CONTACT CHARX – connect

Charging cables (mode 3 & 4)



Product

Performance

Wire

Specific

EV - T2 M4 CC - DC 125A - 5,0M 50 E S BK 0 0 P

Electric vehicle	EV
------------------	----

Charging standard	
Type 1	T1
Type 2	T2
GB/T	GB
Type 1 & Type 2	TA
Type 2 & GB/T	TB
GB/T & Type 2	TC
Type 1 & GB/T	TD

Charging mode handlebar design	
Mode 3	M3
Mode 4	M4
Level 2	L2

Charging mode new design	
Mode 3	G3
Mode 4	G4
Level 2	G2
HPC (High Power Charging)	HP

Generation 3 (only GB/T)	
Mode 3	N3

Type of current	
AC 1-phase	1AC
AC 3-phase	3AC
DC	DC

Heads of the cable	
Plug	P
Connector	C
Key connector	K
Key plug	J
Plug & connector	PC
Plug & key connector	PK
Key plug & Key connector	JK
CCS connector	CC

Performance	
16 Ampere	16A
20 Ampere	20A
32 Ampere	32A
40 Ampere	40A
60 Ampere	60A
80 Ampere	80A
125 Ampere	125A
150 Ampere	150A
180 Ampere	180A
200 Ampere	200A
250 Ampere	250A
400 Ampere	400A
500 Ampere	500A

Cable length	
4,0 Meter	4,0M
4,5 Meter	4,5M
5,0 Meter	5,0M
10,0 Meter	10,0M
X,X Meter	X,XM
18,0 feet	18,0F
25,0 feet	25,0F
X,X feet	X,XF
No cable	N

Cross section	
2,5 mm ²	2,5
6,0 mm ²	6,0
16 mm ²	16
25 mm ²	25
35 mm ²	35
50 mm ²	50
70 mm ²	70
14 AWG	14
12 AWG	12
10 AWG	10
8 AWG	8
6 AWG	6
1 AWG	1

Measurement unit for cable	
AWG (America)	A
Metric (Europe)	E
Metric (Japan) conform to PSE	J
Metric (China) conform to CQC	C

Cable style	
Helix	H
Straight	S
Cooled	C

Cable color	
Black	BK
Orange	OG
Red	RD
Yellow	YE
Blue	BU

2 nd part component color & label	
Grey + label area	0
Black + label area	1
Black + blank brand label area	3
Black + without label area	5
No specific	

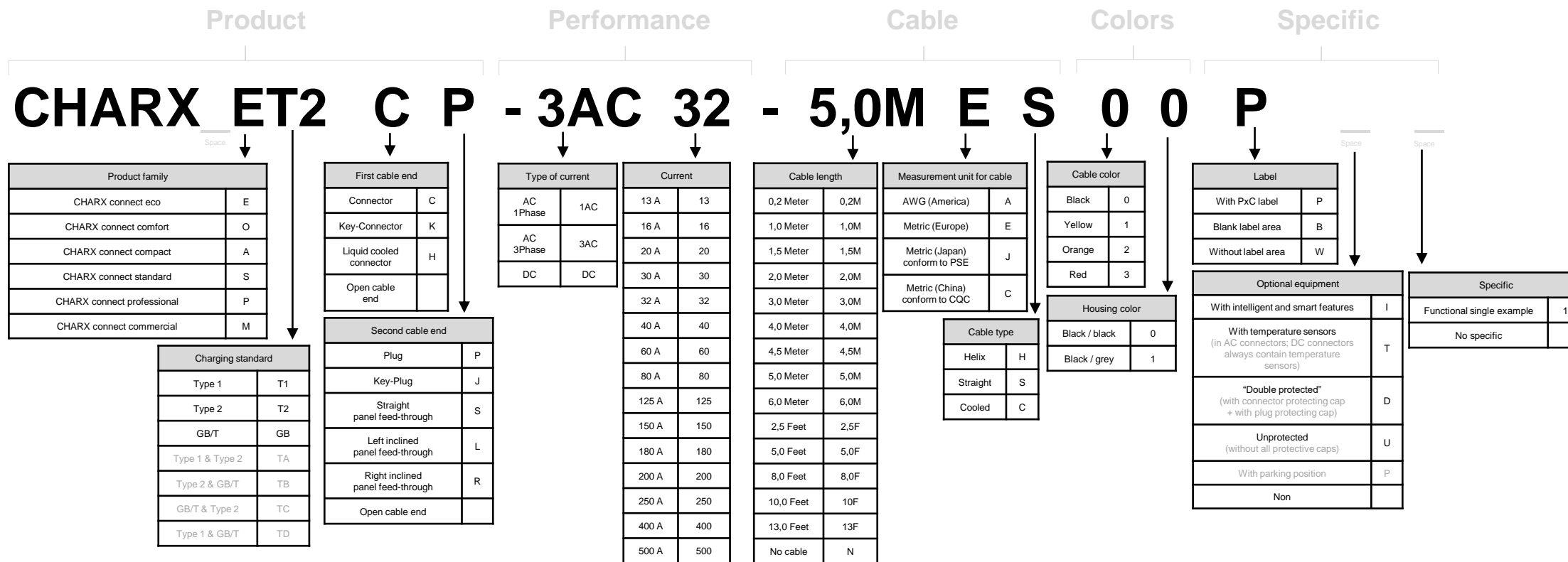
Mating face color ²⁾	
Grey	0
Black	1

Optional Specific	
AC connector with temperature sensor ¹⁾	T
Unprotected (without protective cap)	U
With parking position	P
With straight HPC panel feed-through	S
With left inclined HPC panel feed-through	L
With right inclined HPC panel feed-through	R
With measurement of cable dissipation power via 4-wire-measurement	M
No specific	

¹⁾ DC connectors always contains temperature sensors.
²⁾ Standard articles of CCS 2 connectors in handlebar design are with black mating face.

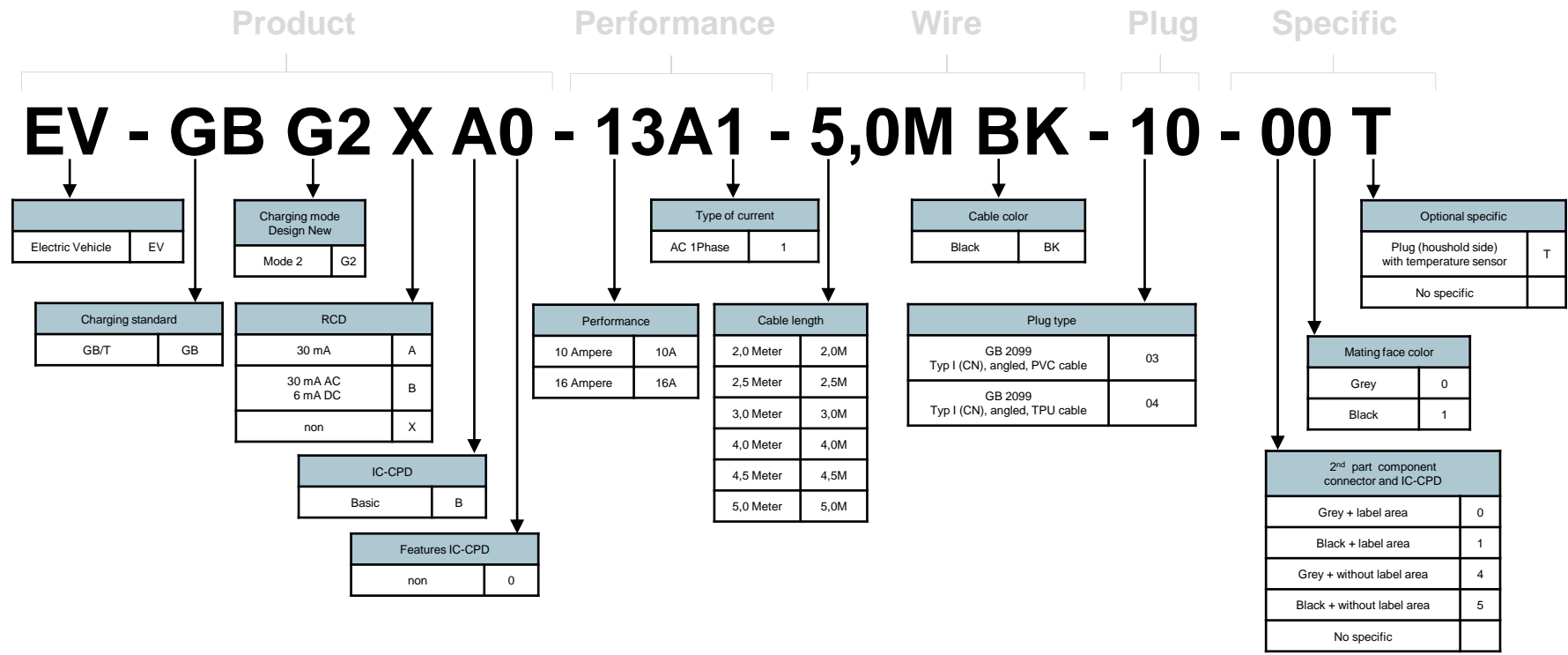
Item type code – PHOENIX CONTACT CHARX – connect

Charging cables (mode 3 & 4)



Item type code – PHOENIX CONTACT CHARX – connect

Charging cables with IC-CPD (mode 2)



Item type code – PHOENIX CONTACT CHARX – connect

Accessories for charging cables



Product

Specific

EV T2 CCS - PARK - E12 - SW - D6,5MM - R

- 11

Charging standard		Charging type	
For Type 1	T1	For AC	AC
For Type 2	T2	For DC	DC
For GB/T	GB	For CCS	CCS
No Standard		For HPC	HPC
		No type	

- MF

- M4X10 - BIT - CTS

- 11

- PCU

- 11

Type of accessories	
Charging connector holder ("parking position")	PARK
Carrier bag for charging cables	BAG
Label according to DIN EN 17186	LABEL
Mating face for a repair kit	MF
Passive Cooling Unit	PCU
Quick connector	QC
Grip for an easier cable handling	GRIP
Emergency release tool	UNLOCK-TOOL

Specific for PARK	
With 12 V E-Lock	E12
With 24 V E-Lock	E24
With integrated switch (normally close)	SW
With integrated switch (normally open)	SWC
Hole for M6 screws (6,5 mm diameter)	D6.5MM
Mounting whole for hexagon head screw (reinforcement)	R

Specific for GRIP	
Diameter of cable for the separate GRIP	D35,7MM

Specific for MF	
With M4X10 screws	M4X10
With M4X45 screws	M4X45
With bit	BIT
With bit and contacts	BIT-C
With bit and contacts including temperature sensors	BIT-CTS

Specific for LABEL	
Printed "B"	B
Printed "C"	C
Printed "K"	K
Printed "L"	L

Branding	
Without PxC branding	0 (WL)
With PxC branding	1 (PC)
No specific	

Design	
Design Line 0	0
Design Line 1	1
Design Line 2	2
Design Line 3	3
No specific	

Item type code – PHOENIX CONTACT CHARX – connect

Accessories for charging cables



Product

Description

Specific

CHARX T2 CCS - PARK - E12 - SW - D6,5MM - R

Space

Charging standard		Charging type	
For Type 1	T1	For AC	AC
For Type 2	T2	For DC	DC
For GB/T	GB	For CCS	CCS
Non		For HPC	HPC
		Non	

- MF - M4X10 - BIT - CT

- PCU

Type of accessories	
Charging connector holder ("parking position")	PARK
Carrier bag for charging cables	BAG
Label according to DIN EN 17186	LABEL
Mating face for a repair kit	MF
Passive Cooling Unit	PCU
Active Cooling Unit	ACU
Quick connector	QC
Grip for more easy cable handling	GRIP
Fan for cooling down a panel feed through	FAN
Protective cap	PROTECTIVE-CAP

Description for PARK	
With 12 V E-Lock	E12
With 24 V E-Lock	E24
With LED-Option	LED
With detection of the charging connector	D
Mounting whole for hexagon head screw (reinforcement)	R

Description for GRIP	
Diameter of cable for the separate GRIP	D35,7MM

Description for LABEL	
Printed "B"	B
Printed "C"	C
Printed "K"	K
Printed "L"	L

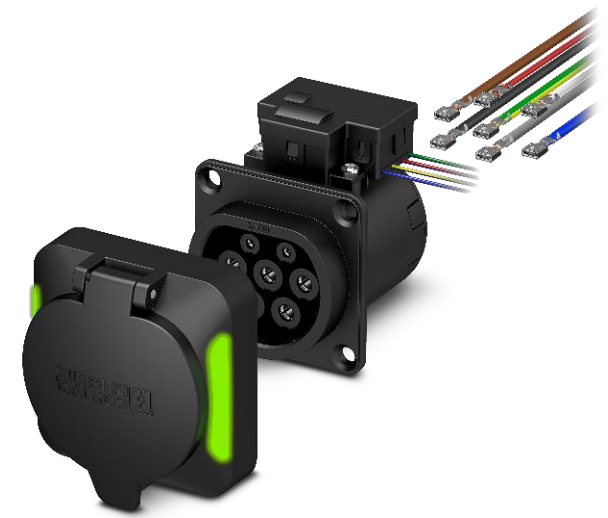
Description for MF	
With M4X10 screws	M4X10
With M4X45 screws	M4X45
With bit	BIT
With bit and contacts	BIT-C
With bit and contacts including temperature sensors	BIT-CTS

P

Space Space

Label	
With PxX label	P
Blank label area	B
Without label area	W
Non	
Optional equipment	
Non	
Specific	
No specific	
Different Designs	1,2,...9

Item type code – PHOENIX CONTACT CHARX – connect Infrastructure charging sockets



Product Actuator Specific

EV - T2 M3 SO12 - 4P - B - SET

Electric vehicle		EV		Charging standard		Type of product		E-Lock poles		Design		Optional specific											
Type 2		T2		Mode 3		M3		Socket outlet with 12 V E-Lock		SO12		3 pole E-Lock		3P		Basis		B		Hinged cover without Phoenix Contact Logo		WL	
Socket outlet with hinged cover		SOC		4 pole E-Lock		4P		Basis		B		Set consisting of a socket outlet and a hinged cover		SET		Premium		P		"Easy Mount"		EM	
Socket outlet with cap with strain relief and touch protection		SO-CAP		Basic with LED option		BL																	



Product Performance Cable

EV - T2 M3 SOW - 3AC 32A - 0,7M 6,0 E

Electric vehicle		EV		Charging standard		Type of product		Type of current		Performance		Cable length		Cross section		Measurement unit for cable															
Type 2		T2		Mode 3		M3		Wiring harness for socket outlet		SOW		AC 1-phase		1AC		20 Ampere		20A		0,3 Meter		0,3M		2,5 mm ²		2,5		Metric (Europe)		E	
AC 3-phase		3AC		32 Ampere		32A		0,7 Meter		0,7M		X,X Meter		X,XM																	



Item type code – PHOENIX CONTACT CHARX – connect

Vehicle charging inlets



Product

Performance

Wire

Specific

EV - T2 GB IE12 - 1ACDC 20A 125A - 2,0M 1

Electric vehicle	EV
------------------	----

Charging standard	
Type 1	T1
Type 2	T2
GB/T	GB

Type of vehicle inlet	
Vehicle inlet	I
Inlet e-lock 12 V	IE12
Inlet e-lock 24 V	IE24

Type of current	
AC 1-phase	1AC
AC 3-phase	3AC
DC	DC
AC 1-phase + DC	1ACDC
AC 3-phase + DC	3ACDC

Performance AC	
20 Ampere	20A
32 Ampere	32A
80 Ampere	80A

Performance DC	
125 Ampere	125A
200 Ampere	200A
250 Ampere	250A

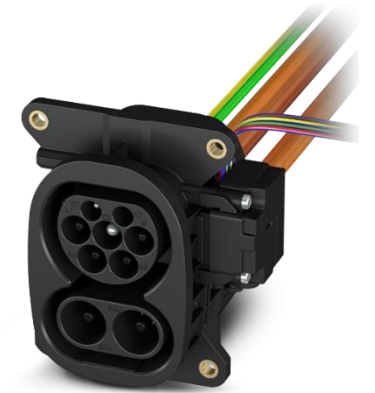
Cable length	
2,0 Meter	2,0M
3,0 Meter	3,0M
No cable	N

Actuator mounted	
Not mounted	0
0° mounted (top)	1
90° mounted (right)	2
270° mounted (left)	6

Charging mode Gen 1		Charging mode Gen 2/3	
Mode 4	M4	Mode 4	G4
All Modes	MA	All Modes	GA
Modes 2+3+4	MB	Modes 2+3+4	GB
Modes 2+3	MC	Modes 2+3	GC
Modes 1+2+3	MD	Modes 1+2+3	GD
Modes 3+4	ME	Modes 3+4	GE
Level 2	L2	Level 2	G2

Item type code – PHOENIX CONTACT CHARX – connect

Vehicle charging inlets



Product

Performance

Wire

Actuator

CHARX T2 I12 - 1AC 20 DC125 - 2,0M 1

Charging standard		Locking actuator		Type of current		Type of current		Cable length		Actuator mounted	
Type 1	T1	12 V E-Lock	12	AC 1Phase	1AC	DC	DC	2,0 Meter	2,0M	Not mounted	0
Type 2	T2	24 V E-Lock	24	AC 3Phase	3AC	Performance DC		2,5 Meter	2,5M	0° mounted (top)	1
GB/T	GB	non		Performance AC		125 Ampere	125	3,0 Meter	3,0M	90° mounted (right)	2
Product						200 Ampere	200	4,0 Meter	4,0M	270° mounted (left)	6
Vehicle inlet	I					250 Ampere	250	4,5 Meter	4,5M	Production in China	CN
Vehicle inlet production in China	HI							5,0 Meter	5,0M		
Vehicle inlet for modes 2+3+4	HBI							No cable	N		
Vehicle inlet for modes 2+3	HCI										
Vehicle inlet for modes 4	H4I										

Item type code – PHOENIX CONTACT CHARX – connect

Accessories for infrastructure charging sockets & vehicle charging inlets



Product

Specific

**EV T2 SC - EM
M3SM-E-LOCK**

**- B - WL
- 12V**

Charging standard	
For Type 1	T1
For Type 2	T2
For GB/T	GB
No Standard	

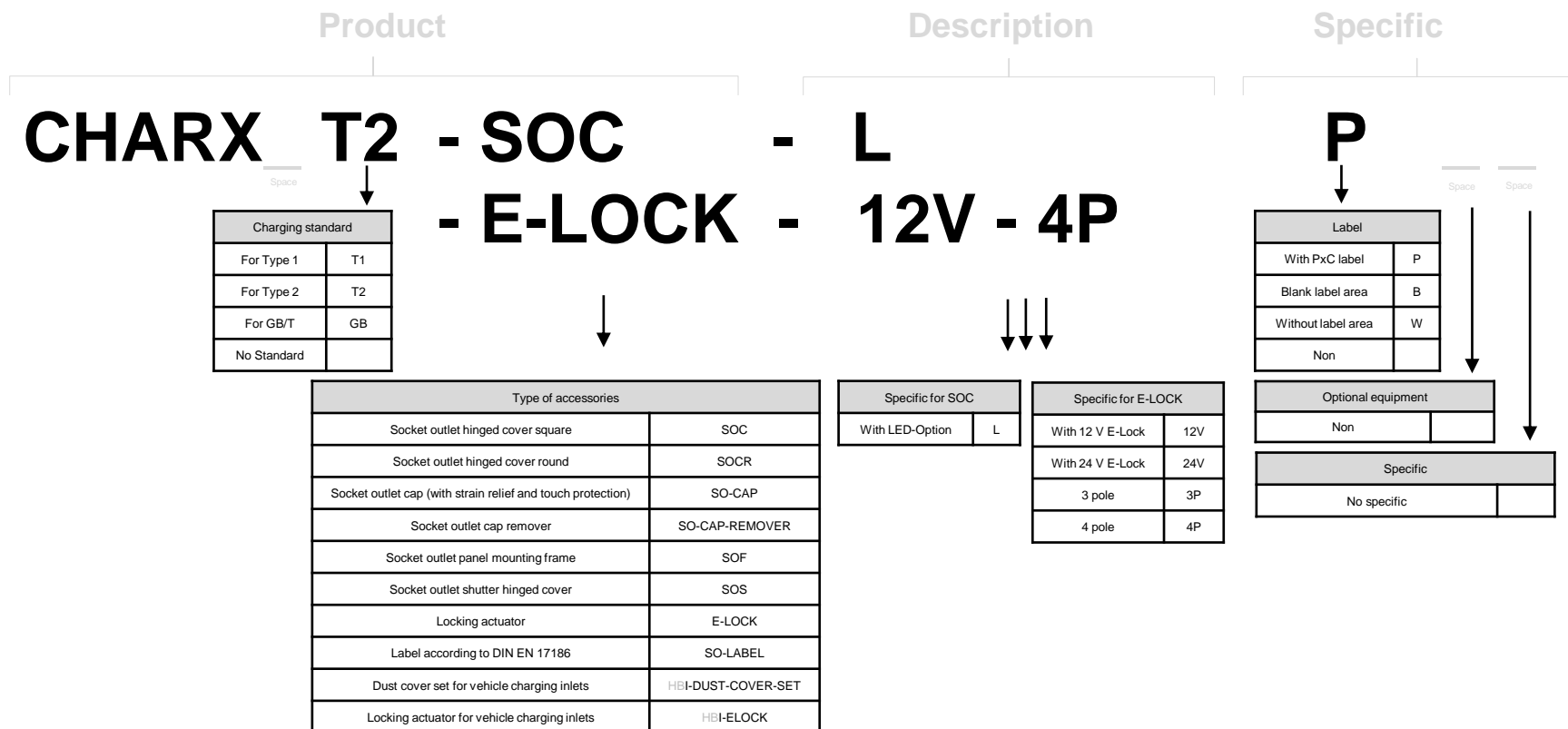
Type of accessories	
Socket outlet hinged cover square	SOC
Socket outlet hinged cover round	SOCR
Socket outlet self-closing hinged cover	SC
Socket outlet self-opening hinged cover	SCO
Socket outlet self-closing hinged cover for "easy mount"	SC-EM
Socket outlet self-closing hinged cover for "easy mount"	SC-EMF
Socket outlet shutter hinged cover	M3SOS
Socket outlet cap (with strain relief and touch protection)	M3SO-CAP
Socket outlet cap remover	M3SO-CAP-REMOVER
Socket outlet panel mounting frame	SOF
Socket outlet mounting frame	SF
Socket outlet mounting frame for "easy mount cover"	SF-EM
4 pole locking actuator Gen 1	M3S-E-LOCK
4 pole locking actuator Gen 2	M3SM-E-LOCK
3 pole locking actuator	M3SL-E-LOCK
Label according to DIN EN 17186	LABEL-C-SO
Dust cover set for vehicle charging inlets	MBI-DUST COVER SET

Specific for all covers	
With LED-Option	L
Basic design	B
Premium design	P
Without PxC branding	WL
Hole for M6 screws (6,5 mm diameter)	D6,5MM

Specific for E-LOCK	
With 12 V E-Lock	12V
With 24 V E-Lock	24V

Item type code – PHOENIX CONTACT CHARX – connect

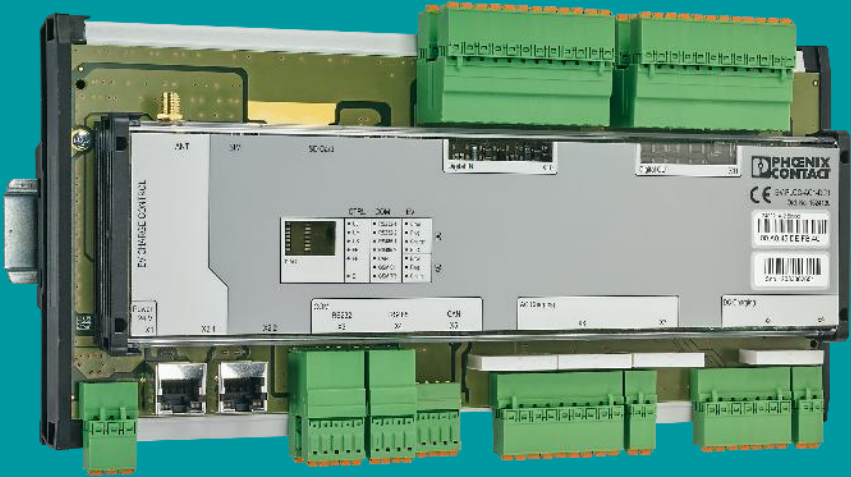
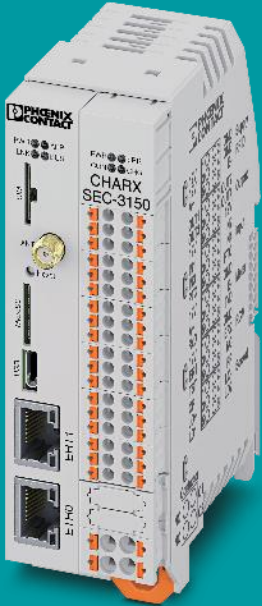
Accessories for infrastructure charging sockets & vehicle charging inlets



PHOENIX CONTACT CHARX – control

charging controllers

charging management software



Item type code – PHOENIX CONTACT CHARX – control

Charging controllers EVCC



Basic

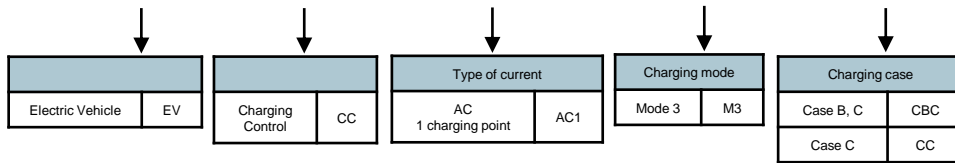
Advanced Plus



Product

Specific

EV - CC - AC1 - M3 - CBC - SER - HS - XC - 25X
- RCM - ETH - 3G

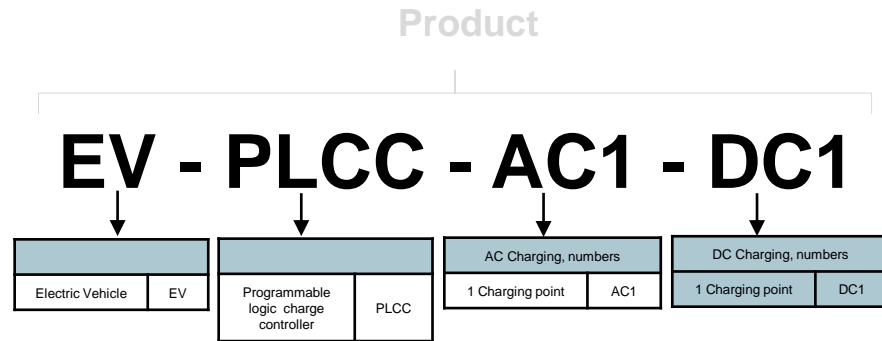
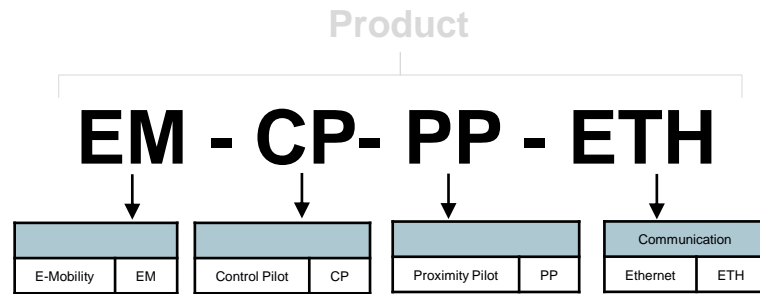


Specific for "Basic"	
Interfase serial	SER
Printed circuit board	PCB
DIN-rail housing	HS
Painted PCB (extended conditions)	XC
MSTB connection	MSTB
Packaging unit 25 pieces	25X

Specific for "Advanced"	
Residual current monitoring	RCM
Ethernet communication	ETH
Mobile communication	3G

Item type code – PHOENIX CONTACT CHARX – control

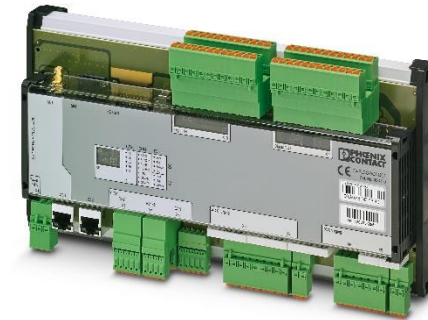
Charging controllers EVCC



Advanced

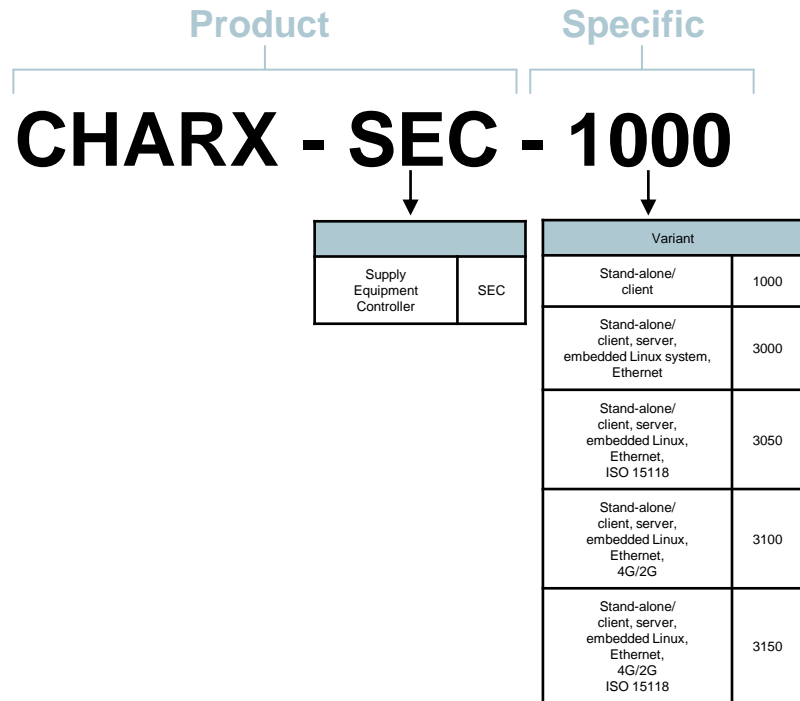


Professional



Item type code – PHOENIX CONTACT CHARX – control

Charging controllers EVCC

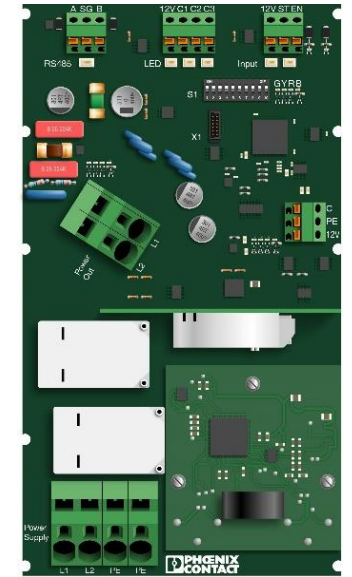
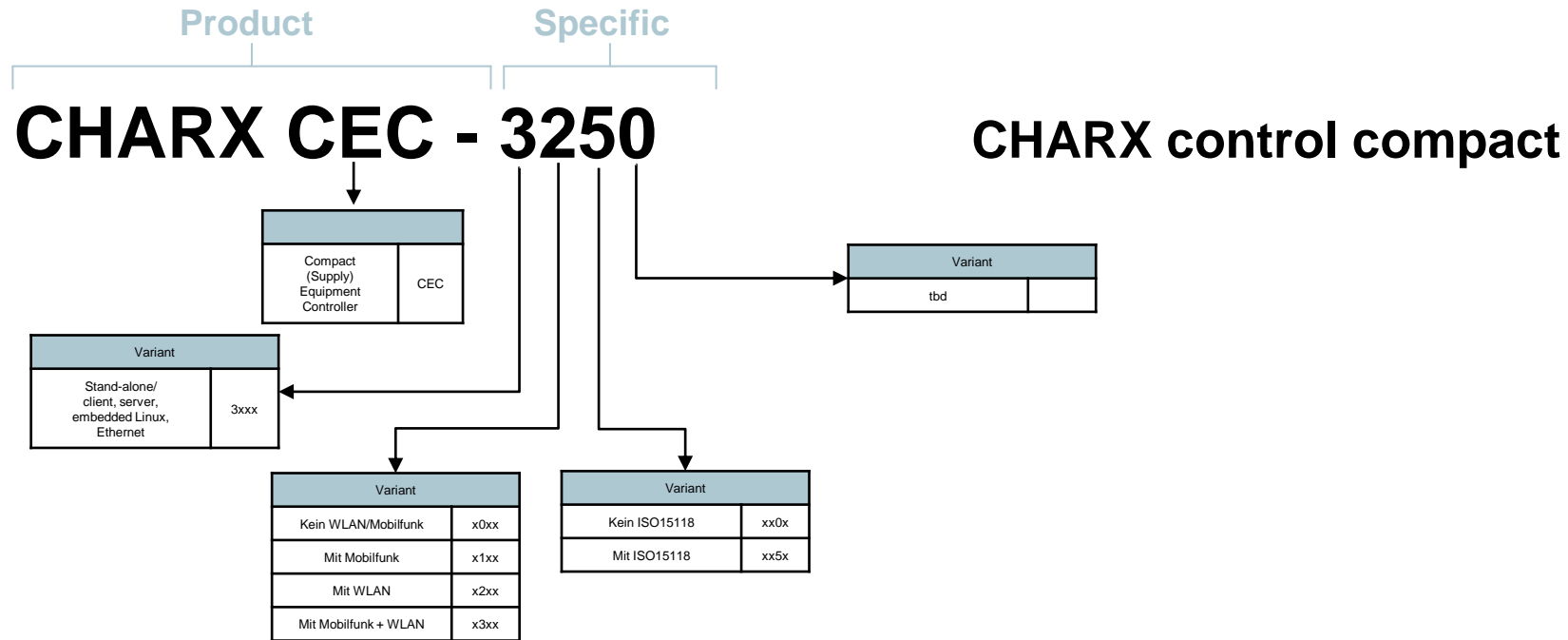


CHARX modular



Item type code – PHOENIX CONTACT CHARX – control

Charging controllers CHARX control compact



Item type code – PHOENIX CONTACT CHARX – control

Radio Frequency Identification

Product

EV - RFID - ELT - PCB - X10

Electric vehicle	EV
------------------	----

Radio Frequency Identification	RFID
--------------------------------	------

Variant	
Printed circuit board	PCB
IP65 housing	IP65

Packaging unit	
10 pieces	X10

